

FIRST UNITED METHODIST CHURCH

117 THIRD STREET, CHERAW, SC 29520

843-537-7002

www.cherawfirstumc.org



**Create in me
a clean heart,
O God,
and put a new
and right
spirit
within me.**

Psalm 51:10

used by
permission
© 2021 Chris
Seurdieck

THE CHURCH WITH A HEART, IN THE HEART OF CHERAW.

A SERVICE OF CHRISTIAN WORSHIP

MARCH 7, 2021

THIRD SUNDAY OF LENT

LITURGICAL COLOR: BURLAP

PRELUDE

"I Sing the Almighty Power of God"
Beth Maier pre-recorded on the organ

WELCOME AND ANNOUNCEMENTS

OPENING PRAYER

PSALTER

Psalm 19 (NRSV)

P: The heavens are telling the glory of God; and the firmament proclaims his handiwork.

C: Day to day pours forth speech, and night to night declares knowledge.

P: There is no speech, nor are there words; their voice is not heard;

C: Yet their voice goes out through all the earth, and their words to the end of the world.

P: In the heavens he has set a tent for the sun, which comes out like a bridegroom from his wedding canopy, and like a strong man runs its course with joy.

C: Its rising is from the end of the heavens, and its circuit to the end of them; and nothing is hid from its heat.

P: The law of the LORD is perfect, reviving the soul;

C: the decrees of the LORD are sure, making wise the simple;

P: the precepts of the LORD are right, rejoicing the heart;

C: the commandment of the LORD is clear, enlightening the eyes;

P: the fear of the LORD is pure, enduring forever; the ordinances of the LORD are true and righteous altogether.

C: More to be desired are they than gold, even much fine gold; sweeter also than honey, and drippings of the honeycomb.

P: Moreover, by them is your servant warned; in keeping them there is great reward.

C: But who can detect their errors? Clear me from hidden faults.

P: Keep back your servant also from the insolent; do not let them have dominion over me. Then I shall be blameless, and innocent of great transgression.

C: Let the words of my mouth and the meditation of my heart be acceptable to you, O LORD, my rock, and my redeemer.

OLD TESTAMENT SCRIPTURE READING

Exodus 20: 1-17

AFFIRMATION OF FAITH - Apostles Creed

I believe in God the Father Almighty,
maker of heaven and earth;

And in Jesus Christ his only Son our Lord:
who was conceived by the Holy Spirit,
born of the Virgin Mary,
suffered under Pontius Pilate,
was crucified, dead, and buried;
the third day he rose from the dead;
he ascended into heaven,
and sitteth at the right hand of God the Father Almighty;
from thence he shall come to judge the quick and the dead.

I believe in the Holy Spirit,
the holy catholic church,
the communion of saints,
the forgiveness of sins,

the resurrection of the body,
and the life everlasting. Amen.

GLORIA PATRI

Glory be to the Father, and to the Son, and to the Holy Ghost,
As it was in the beginning, is now, and ever shall be.
World without end, Amen, Amen.

MORNING PRAYER & LORD'S PRAYER

HYMN	"Open the Eyes of My Heart" by Michael W. Smith	Words in Bulletin
NEW TESTAMENT SCRIPTURE READING	Matthew 22: 36-40	Pastor Debra
SERMON	"All These Words"	Pastor Debra
HYMN	"Take My Life and Let it Be" Beth Maier, pre-recorded on the organ	Words in Bulletin
BENEDICTION		
POSTLUDE	"Amazing Grace" Beth Maier, pre-recorded on the organ	



"Open the Eyes of My Heart"

Michael W. Smith

Open the eyes of my heart, Lord
Open the eyes of my heart
I want to see You, I want to see You

Open the eyes of my heart, Lord
Open the eyes of my heart
I want to see You, I want to see You

To see You high and lifted up
Shinin' in the light of Your glory
Pour out Your power and love
As we sing, "Holy, holy, holy"

Open the eyes of my heart, Lord
Open the eyes of my heart
I want to see You, I want to see You

Open the eyes of my heart, Lord
Open the eyes of my heart
I want to see You, I want to see You

To see You high and lifted up
Shinin' in the light of Your glory
Pour out Your power and love
As we sing, "Holy, holy, holy"

To see You high and lifted up
Shinin' in the light of Your glory
Pour out Your power and love
As we sing, "Holy, holy, holy"

To see You high and lifted up
Shinin' in the light of Your glory
Pour out Your power and love
As we sing, "Holy, holy, holy"

"Holy, holy, holy"
We cry, "Holy, holy, holy"
You are holy, holy, holy
I want to see You

Holy, holy, holy, holy, holy, holy
You are holy, holy, holy, I want to see You
Holy, holy, holy, holy, holy, holy
Holy, holy, holy, I want to see You

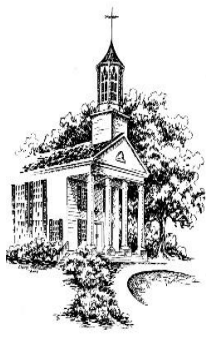
Holy, holy, holy, holy, holy, holy
Holy, holy, holy, I want to see You
Holy, holy, holy, holy, holy, holy
Holy, holy, holy, I want to see You

“Take My Life and Let it Be”
Frances R. Havergal

1. Take my life, and let it be
consecrated, Lord, to thee.
Take my moments and my days;
let them flow in ceaseless praise.
Take my hands, and let them move
at the impulse of thy love.
Take my feet, and let them be
swift and beautiful for thee.

2. Take my voice, and let me sing
always, only, for my King.
Take my lips, and let them be
filled with messages from thee.
Take my silver and my gold;
not a mite would I withhold.
Take my intellect, and use
every power as thou shalt choose.

3. Take my will, and make it thine;
it shall be no longer mine.
Take my heart, it is thine own;
it shall be thy royal throne.
Take my love, my Lord, I pour
at thy feet its treasure-store.
Take myself, and I will be
ever, only, all for thee.



THE CONNECTION

Volume 16, Issue 10
March 7, 2021

The Mission of First United Methodist Church is to win and nurture souls for Jesus Christ by sharing and living the message of salvation.
www.cherawfirstumc.org

A Few Words from the Pastor...

There has been some conversation around the church recently about Lent. My short answer to the questions is that Lent is a time for us to focus on prayer, fasting, and almsgiving as a church in preparation for Easter. Let us delve a bit deeper into how we as a church have in the past and currently participate in Lent.

The word *Lent* comes from the Old English word *lencten* meaning “*the time of the lengthening days*” or more simply, “*spring*.”¹ Lent as we know it now extends forty days, excluding Sundays. Lent begins on Ash Wednesday and ends on Holy Saturday, the Saturday before Easter. The last week of Lent before Easter Sunday, Holy week, is set apart for special emphasis.

Lent was historically the time of preparation for Easter baptism. During this time of instruction, the catechumens fasted, prayed, and studied. The fruit of their labors came in the all-night Vigil of Easter that ended with the baptism and confirmation of the catechumens and the celebration of Christ’s Resurrection. At a later time, all church members joined in making Lent a penitential season of mourning for sin. Then, as time went on, more interest was shown in the trials and suffering of Jesus, than in anticipating and preparing for his victorious Resurrection.

The forty weekdays of Lent also represent the period which Jesus spent in the wilderness during his temptations. According to Matthew’s and Luke’s Gospel accounts Jesus fasted for forty days. This led the church to the practice of “giving things up” as a form of fasting during lent. The symbolism of Lent, except during Holy week, centers on sin, temptation, and penitence for sins. The palm ash crosses placed on foreheads recognizes our mortality and need for repentance.

The current day church takes part in the season of Lent to renew and strengthen spiritual lives and to prepare hearts and minds to receive the Risen Lord once again on Easter. The church provides opportunities to do this as a community through Bible study, prayer and worship. It is equally important for everyone to observe Lent on a personal level. Lent can be observed by self-examination and repentance, by healthy physical short-term fasting and other forms of self-denial (giving up something for Lent) or adding on some new course of action such as daily prayer, reading and meditating on God’s Word daily, or performing random acts of kindness without seeking recognition. These spiritual practices taken on for Lent are not customarily observed on Sundays, which are not part of the forty days, and are celebrated as “little Easters.”

This Lenten Season our focus is rending our hearts wide open so that anything not of God may be washed away and we have clean hearts filled with God’s grace, love, and mercy. Praying for all of us that this season of Lent will spiritually transform and renew us so we are ready to celebrate Easter.

Pastor Debra

¹<https://www.etymonline.com/word/lent>

OUR PRAYER LIST – Our President, our Congress, all Governors, Mayors, State, County, and Local employees, all health care workers, EMT's, all who defend our nation, all who make decisions for our nation, Jane Campbell, Jeff Foster, Mabel Foster, Betty Thrailkill, Jim Bennett, Phillip Caulder, Taylor Novinger (Dr. Novinger's son), Christy Moore (Sally Smith's friend), Becky Thompson, Judy Quick (Sally Smith's friend), Mary Lomas, Scott Tomberlin, The Family of Lloyd Coren (Courtney Eubank's dad), Dallas Keefe, Charlotte Crosby, Syble Sanderson, Terry Cocker (Becky Thompson's friend), Bill Eutsler, Jr (Renie Seel's friend), Sam Eubanks, Betty Board. **NOTE: Names are left on the prayer list for two weeks; after two weeks, they are removed unless the church office is notified.**

*Worship with Us During Holy Week and on Easter Sunday
March 28 – April 4th*

Holy week begins with the Palm Sunday worship service at 10:00 a.m. On April 1st we will have a Maundy Thursday Service at 6:00 p.m. Holy Communion will be provided using individual packets during this service.

There will be two services on Easter Sunday, April 4th. The Easter Sunrise service will be on the lawn at 6:30 p.m. Please bring a chair, wear a mask, and keep social distance. We will have the flowering of the cross after this service. Members are invited to bring flowers to put on the cross. The traditional Easter service will be at 10:00 a.m. in the sanctuary.

SYMPATHY: FUMC extends its sympathy to the Joan Mayhew Easterling family upon her death and to David Rhode upon the death of his mother.

YOUR HELP IS NEEDED: The UMW have started purchasing cantered meals for bereavement meals due to the COVID-19 restrictions. If you would like to donate to this cause, please mark your check bereavement meals and mail it or drop it off at the church on Sunday morning.

FLOWER CALENDAR: The 2021 flower calendar has been placed in the lobby area. If you would like to sign up for a special Sunday, please sign up on the calendar on Sunday or call the church office and Angie will put your name on the calendar for you.

A mask worn incorrectly is not safe or effective.

ARE YOU WEARING YOUR MASK CORRECTLY?



Make sure:

- ✓ Your nose, mouth, and chin are covered.
- ✓ Your straps should hold your mask snugly around your face without any gaps.



Thank You For Your Cooperation With Our COVID-19 Safety Protocols!

- Enter Through Office Lobby
- Temperature Checks
- Exit Through Sanctuary Front Doors after Worship as Directed by Ushers
- Maintain 6ft Distance
- No Singing
- Wear Masks Properly and the Entire Time You Are in the Church

SUNDAY SCHOOL CLASSES: All Sunday School classes are postponed until further notice due to the high incidence of COVID-19 in our area.

BOOK AVAILABLE: Copies of the book titled "Resurrection, A Pastor's Reading of the Major New Testament Resurrection Passages" by Pastor Phil Thrailkill, are available in the church office. They are \$15.00 each and the money is being donated to FUMC.

J.O.Y CLUB: The J.O.Y Club will not be meeting until further notice. Mary and Renie will advise when the first meeting will be.

MEMORIAL GIFTS: If you would like to give an "in memory" gift to FUMC, you may designate it to any area listed below: Contingency Fund, Endowment Fund, Memorial Fund, Music Fund, Adult Exercise Class, Salkehatchie Summer Service, Bus Fund, Youth Ministries, Children's Ministries, Building Upkeep Fund, Parsonage Upkeep Fund, Grounds Upkeep Fund, Pastor's Discretionary Fund, Flower Fund, Bereavement Meals, and named Scholarships. Call the church office for more information.



MEAL BACKPACK MINISTRY: The Lenten Meal Backpack Mission Project is well underway, and we are close to reaching the first step goal of one month of food for 50 students. By Easter we want to reach the final goal of providing enough funds for three months of food for 50 students. Please help us stamp our hunger and food insecurity for the children in need at Cheraw Intermediate School. You may donate by placing cash or checks in the

backpack on the table in the lobby on Sunday mornings. Or you may mail in your donation to the church office. Be sure to put meal backpack mission in the memo section of your check and/or on your envelope.





Nurture and Care Ministry Reaching Hearts

First United Methodist Church's Nurture and Care ministry works extremely hard to help shut-ins stay connected with our church especially during the covid-19 pandemic. Phone calls, cards, and gifts help those who cannot attend church at this time know we love them and are thinking about them. The transport ministry has provided rides for several individuals to doctor's appointments. If you would like to be contacted by one of our ministry volunteers, or if you need a ride to a doctor's appointment, please contact the church office at 843-537-7002.



Join us for virtual worship when you cannot be here in person. Sunday Morning Worship Services are recorded each week in the sanctuary. The service is available by 2 p.m. on the Sunday it is recorded. To worship with us virtually go to [www.fumc.org](#). Click on the tab labeled "video sermon archive." Then click on the service you want to participate in and enjoy worshipping with your church family. The most recent sermon will always be at the top of the list.

ENDOWMENT FUND: Have you considered remembering the church in your will/bequests? The Endowment can grow through your special giving, if you would like to make a contribution to this fund, mark on the "for line" of your check Endowment Fund.



Your Help Needed!

We do not currently have a person on staff to provide music for worship. Volunteer musicians are providing the music for the prelude and postlude each Sunday. We are using recordings of hymns. If you can play the guitar, piano, organ we need your help to provide music for our worship service in this transition. Please contact Jenny Keefe at 843-601-2586 and offer to share your God-given talents with our church.

AARP FOUNDATION TAX-AIDE TAXPAYER SURVEY: Tax-Aide is for older adults who are on a fixed income or low income, you do not have to be a member of AARP, if you would like to make an appointment or have any questions please call 843-638-3045.

COVID-19 VACCINE INFORMATION: Below find the information where the COVID-19 Vaccine is being given. Also below is a chart that shows the phases of this vaccine and when they are expected to begin.

CareSouth Carolina-Chesterfield (Public health provider-Federally Qualified Health Center)
204 Perry Wiley Way, Chesterfield, SC 29709 (Tuesday, Thursday & Friday 9am-3pm)
Appointments available based on vaccine allocation and staffing availability. 843-623-5080

McLeod Health (Cheraw) @ Pine Grove Baptist Church, 293 Zoar Road, Chesterfield, SC 29709
Friday, March 5 **2ND DOSE ONLY** 8:00am-1:00pm, No voucher Required.

Carolina Pines Regional Medical Center (Hospital)
Accepting Phase 1a and people 65+ Years
1304 W. Bobo Newsom Hwy., Hartsville, SC 29550 843-656-0101

OVERVIEW

South Carolina continues to focus on protecting the lives and health of South Carolinians from COVID-19. With the increased supply of vaccine and progress in vaccinating people in group 1a (front line health care workers and those age 65 and over), South Carolina is ready to move on to the next phase. This plan prioritizes those with greatest risk, while ensuring equitable access to the vaccine for every South Carolinian age 16 and over.

This approach continues to recognize that risk of hospitalization and death from COVID worsens with age, especially for those over 45, and that people with certain medical conditions and occupational exposures are at higher risk. As a result, South Carolina will move to phase 1b, and then 1c and 2 as described below with the goal of vaccinating every South Carolinian who wishes to receive the vaccine by Summer.

How will individuals demonstrate eligibility?

When seeking vaccine services individuals included in Phase 1b or 1c may show eligibility by showing an ID that includes their date-of-birth, attesting that they meet the criteria established above for a Frontline/Essential Worker, or by attesting that they have an eligible high-risk medical condition.

PHASE 1B

Appointments can be made by individuals in the following groups beginning March 8, 2021:

1. Individuals aged 55 and up
2. Individuals with Increased Risk for Severe COVID-19 Disease
 - o Persons aged 16-54 with one or more of the following high-risk medical conditions**
 - o Persons who have a developmental or other severe high-risk disability that makes developing severe life-threatening illness or death from COVID-19 infection more likely

***High-risk medical conditions: cancer (current, not a history of cancer), chronic kidney disease (any stage), chronic lung disease, diabetes (Type 1 and Type 2), Down syndrome, heart disease (congestive heart disease, coronary artery disease, cardiomyopathy, pulmonary hypertension), HIV/AIDS, solid organ transplant, obesity (BMI >30), pregnancy, sickle cell disease.*

3. Frontline Workers with Increased Occupational Risk

Frontline workers with increased occupational risk are people who:

- o Must be in-person at their place of work, and
- o Perform a job in which they are at increased risk of exposure due to their frequent, close (<6 feet) and ongoing (>15 minutes) contact with others in the work environment

Examples of frontline workers include, but are not limited to teachers and daycare workers, manufacturing workers, grocery store workers, law enforcement officers, etc.

4. Individuals at Increased Risk in Settings where People are Living and Working in Close Contact
 - o Residents and workers in group home settings for the mentally or physically disabled or those with behavioral or substance abuse conditions
 - o Workers and residents in homeless shelters
 - o Workers and residents in community training homes (CTHs)
 - o State and local correctional facility staff with direct inmate contact
 - o Correctional and immigration detention facility inmates
 - o Migrant farmworkers living in shared housing or reliant on shared transportation
5. All workers in healthcare and community health settings who have routine, direct patient contact and were not vaccinated in Phase 1a

PHASE 1C

Appointments can be made by individuals in the following groups beginning approximately April 12, 2021*:

1. Individuals aged 45 and up
2. Essential Workers

This group includes those who work in essential job categories as defined by the CDC* who are not included in phase 1b because they do not have frequent, close contact with others in the work environment (examples may include construction workers, delivery drivers, utility workers, etc. who do not have frequent, close and ongoing contact with others)

PHASE 2

Appointments can be made by individuals in the following groups beginning approximately May 3, 2021*:

All South Carolinians age 16 and above

**All time estimates are subject to change due to vaccine availability, demand, and provider participation.*

The need is constant.
The gratification is instant.
Give blood.



FIRST UNITED METHODIST CHURCH

117 Third Street, Cheraw -- Fellowship Hall

TUESDAY, MARCH 9
1:00PM – 6:00PM

**COVID-19 Antibody testing will be done on each
donation.**

Angie Smith 843-537-7002 or fumcangiesmith@gmail.com or
www.redcrossblood.org and use sponsor code FUMCcheraw

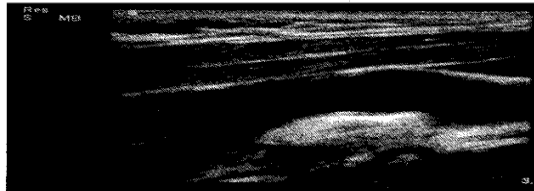
redcrossblood.org | 1-800-RED CROSS

Take a step toward staying

Healthy & Active

Be Smart: Do More For Your Cardiovascular Health

No Plaque Buildup



Plaque Buildup



Advanced ultrasound technology looks inside your arteries for signs of plaque buildup. That's why **9 out of 10 cardiovascular doctors** support preventive screenings for those with key risk factors*

*Key Risk Factors include Age 55+, High Blood Pressure, High Cholesterol, Diabetes, Obesity, tobacco usage, family history of CVD or stroke

We are coming to your neighborhood.

Where: Cheraw - First United Methodist Church
When: Thursday, March 11, 2021
Pre-registration is required. Call: 1-888-653-6450

To register for your appointment and to receive a special \$10 discount, please call 1-888-653-6450 or visit www.lifelinescreening.com/community-partners

Trusted by Hospitals Nationwide.

Life Line Screening has partnered with over **100 hospitals** across the country and has conducted **8 million** screenings since 1993.



Carotid Artery (Plaque) Screening —
Ultrasound scan of the carotid arteries that screens for buildup of fatty plaque — a leading cause of strokes.



Heart Rhythm Screening (Atrial Fibrillation) —
A quick and easy test using EKG electrodes placed on the arms and legs to identify the presence or absence of an irregular heartbeat.



Abdominal Aortic Aneurysm Screening —
Ultrasound screening for an abdominal aneurysm (enlargement) that could lead to a ruptured aorta.



Peripheral Arterial Disease Screening —
Evaluates for peripheral arterial disease (PAD) in the lower extremities, which increases the risk of heart disease.



Osteoporosis Risk Assessment —
Ultrasound screens the heel for bone mass density. Osteoporosis is painless and silent in its early stages.

PACKAGE 1

Plaque, Vascular Disease and Heart Rhythm Package — 4 tests for only \$139!

PACKAGE 2

Add an Osteoporosis Screening for only \$10 more — 5 tests for only \$149!

A \$181 savings!

Screening results are provided to you in 21 days. We direct all participants with abnormal results to take the report to their physician. Carotid Artery and PAD screenings help identify the presence of Atherosclerosis, and if found, can be an early warning for higher risks of stroke and coronary artery disease. Such early warning information can help you and your doctor take important steps to reduce your risk for more serious health issues. If necessary, steps may include lifestyle and diet, medical therapies, and even more thorough follow-up testing and evaluation of your heart function. Appropriate modification of risk factors (including high blood pressure, smoking, heart disease, diabetes and poor diet) is also necessary for cardiovascular disease prevention. Our screenings cannot detect all forms of stroke risk or cardiovascular disease. All tests are for screening purposes only. You should consult with your personal physician regarding your screening results. Insurance Note: Life Line Screening does not participate in the Medicare program and the cost of our screening services is not covered or reimbursable by Medicare. Life Line Screening does not file insurance claims nor provide referrals to any physician's group or hospital. Screenings in California are provided by Life Line Mobile Screening, a physician owned practice. Screenings in Kansas are performed by Life Line Screening of America, Ltd. on behalf of Life Line Screening Physicians, P.A. Screenings in New Hampshire, New Jersey and New York are performed by Life Line Medical Screening, LLC (Dr. Andrew Manganaro, 70 Niagara Street, Buffalo NY, 14202). Life Line Screening does not engage in the practice of medicine in those states. This information is not intended to induce referrals by Life Line Screening to Life Line Medical Screening, LLC for any professional medical service. Texas residents: Physician authorization is required. A Life Line Screening affiliated physician will provide authorization for you if you qualify. Cancellation Policy: A full refund is issued if you call to cancel at least two days prior to your appointment. If less than two days' notice is given, we will issue a Gift card for the full amount to be used by you, or anyone you choose, to purchase future screening services.

MEMORIALS

In Memory of Harold Lomas

M&M Ronnie Cundiff, M&M Sam Eubanks, David & Erin Johnson, M&M Robert Calhoun,
John & Linda McQuaige Dellinger, Jerry Leach, M&M George Adams

In Memory of Jane Mayhew

M&M Ronnie Cundiff, M&M George Adams

In Memory of Billy Wicker

Jerry Leach, Barbara Smith, M&M Robert Calhoun

In Memory of Margie Wannamaker

M&M George Adams

In Memory of Jerry & Sarah Margaret Therrell

M&M George Adams

In Memory of Billy and Sarah Wicker

M&M George Adams

In Memory of Pete Baker

Patty, Taylor & Kate Fisher, M&M George Adams

In Memory of Anne Bryan

M&M George Adams

In Memory of Amy Smith

Patricia & Procter Allen, Patty, Taylor & Kate Fisher, M&M George Adams

In Memory of Jean Leach

M&M George Adams

UPCOMING EVENTS

Sunday, March 7, 2021

10:00am Worship in Sanctuary
5:30-7:00pm UMYF

Monday, March 8, 2021

6:30pm Boy Scouts (NETC)

Tuesday, March 9, 2021

8:30am-4:30pm Church Office Open
1:00pm-6:00pm Blood Drive (Fellowship Hall)
6:30pm Child Development Board
Meeting (Pairs and Spares Classroom)

Wednesday, March 10, 2021

8:30am-4:30pm Church Office Open
12:00pm March 14 Bulletin Deadline

Thursday, March 11, 2021

8:30am-4:30pm Church Office Open
4:30pm Online Lenten Bible Study
Life-Line Screening (Fellowship Hall)

Sunday, March 14, 2021

10:00am Worship in Sanctuary
5:30-7:00pm UMYF

Weekly amount needed for budget: \$5,797.85
Amount received week ending March 3: \$13,617.36
Attendance February 28: 42
Meal backpacks Total: \$345.00

Amount needed year to date: \$33,498.68
Received year to date: \$46,070.48
McArn Items: Soups
Head Ushers: Keith Smith and Jeff Johnson

FUMC STAFF

Rev. Debra Armstrong, Pastor (daarmstrong@umcsc.org) 843-537-7002 O 843-253-3132 C
Angie Smith, Ministry Assistant (fumcangiesmith@gmail.com)
Holly Haire, Child Development Ministry Director (fccdm@yahoo.com)
Now Hiring! - Music Director